



STX56

STX Automated Incubator

- Stand-Alone or Bench-Top
- Heated or Cooled Versions
- Temperature + Humidity Control

Service Port 

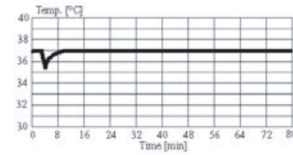
STX56

Stable and Precise Climate Conditions

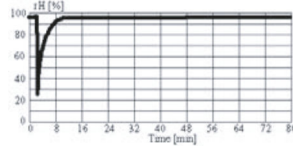
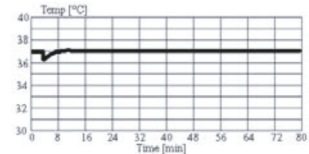
Stable and reproducible climate conditions are the key to success in modern screening applications.

The small StoreX 56 transfer gate guarantees extremely stable and reproducible environmental conditions for your assays. Fastest recovery times allow frequent plate loading and unloading.

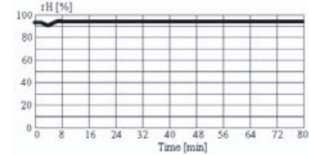
Highest accuracy and stability over time is maintained by using sensors monitored by the Swiss Office of Metrology and the Swiss Accreditation Service.



Access through the small robotic gate



Access through full-sized user door



Climate Options

Type	Temperature	Humidity	Description	Order Nr. STX56 Stand Alone	Order Nr. STX56 Bench Top
STX56-IC	33..50°C (70°C)	max. 95%	Incubator	118 27 00	118 27 08
STX56-HC ¹⁾	04..25°C	max. 90%	Humid Cooler	118 27 01	118 27 09
STX56-DC2 ^{1) 3)}	04..25°C	04..50%	Dry Storage	118 27 02	118 27 10
STX56-HR ¹⁾	04..50°C (70°C)	90..95%	Humid Wide Range	118 27 03	118 27 11
STX56-DR2 ^{1) 3)}	04..50°C	02..50%	Dry Wide Range	118 27 06	118 27 14
STX56-AR ^{1) 2)}	04..50°C	10..95%	Humidity Controlled	118 27 05	118 27 13
STX56-DF ¹⁾	-20..0°C ⁴⁾	02..45%	Deep Freezer	118 27 04	118 27 12
STX56NC	-	-	No Climate	118 27 07	118 27 15

¹⁾ Humidity depends on temperature setting / ²⁾ Humidity Adjustable / ³⁾ Adjustable dehumidification / ⁴⁾ up to +20°C on request

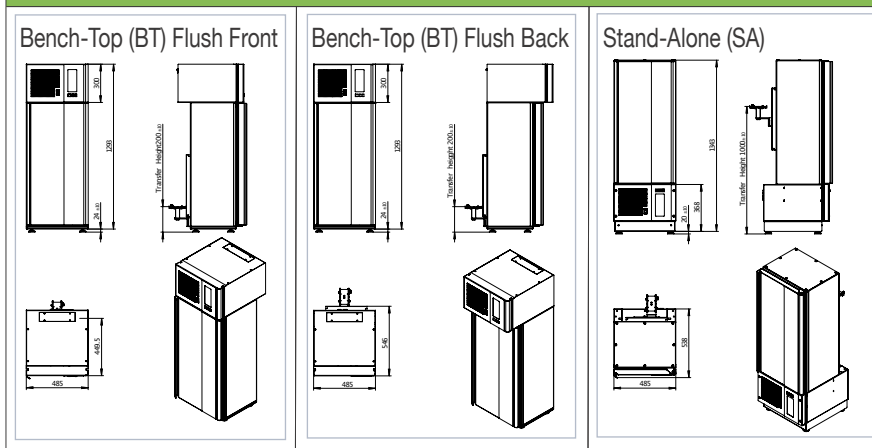
Options

	Order Nr.		Order Nr.
High temperature 70°C capability	9118 11 02	Fast CO2	9118 11 12
Bar Code Reader Option	9118 11 03	Fast N2	9118 11 13
Plate Presence Sensor	9121 00 62	Fast O2	9118 11 14
Fast access for time critical applications	9111 10 00	Additional CO2	9118 11 07
Deep well upgrade kit	9118 12 22	Additional N2	9118 11 11
Disposal Tips upgrade kit up to 100mm height	9118 12 23	Additional O2	9118 11 08
N-Way Decontamination	9122 05 28	Steam Injection	9118 11 16
Liconel self decontaminating incubator chamber	9118 12 43	UCI	9118 11 17
Easy Clean option	9118 12 21	Various Shaking options	see separate Product Flyer

Integration:

For maximum flexibility the StoreX 56 is available in stand-alone (top transfer gate) or bench-top (bottom transfer gate) versions. The easily access able transfer station and a standard RS232 connection ensure simple integration into an environment.

Dimensions



Capacity

Plate Type	Plate Height	Plate capacity of unit
NTP	5 mm	116
	11 mm	76
1536	12 mm	70
	17 mm	56
	22 mm	46
MTP	23 mm	44
	24 mm	42
	27 mm	38
DWP	44 mm	26
	53 mm	20
DiTi200	66 mm	18
DiTi1000	104 mm	10



www.Liconic.com
 Europe & International: Liconic AG, Liechtenstein
 UK & Nordic: Liconic UK Ltd, Manchester
 US & Asia: Liconic Inc, Woburn MA