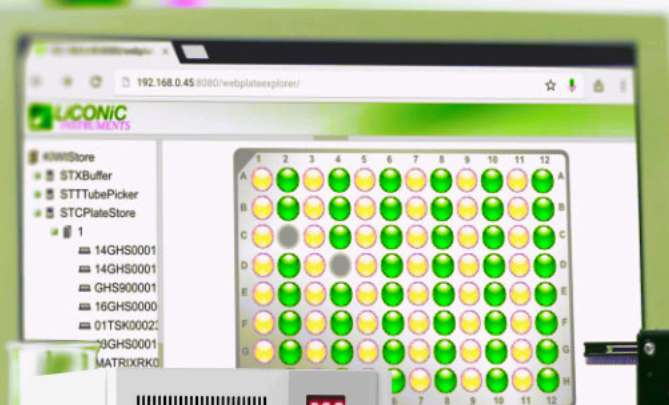


-20°C
+70°C



STX44

Automated
Incubator

- Stand-Alone or Bench-Top
- Heated or Cooled Versions
- Temperature
+ Humidity Control



StoreX
Series

STX44

Unlock Precision, Versatility, and Efficiency with the STX44 Automated Incubator!

Stable and Precise Climate Control:

- Optimize your screening applications with stable and reproducible climate conditions. Our StoreX 44 transfer gate ensures an ultra-stable environment, ensuring reliable assay outcomes. Experience industry-leading recovery times for efficient plate handling.

Uncompromising Accuracy and Stability:

- Maintain the highest level of accuracy over time with our meticulously monitored sensors. Trusted by the Swiss Office of Metrology and the Swiss Accreditation Service, our sensors ensure exceptional quality control for your experiments and sample storage.

Tailored Climate Options:

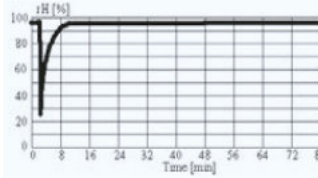
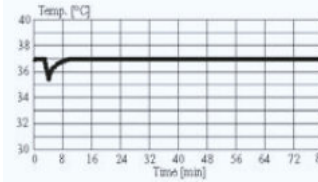
- Customize the incubation environment to meet your specific needs. With a range of temperature and humidity configurations, the STX44 accommodates various sample types. Achieve precise incubation temperatures, humid cooling, or dry storage for ultimate flexibility.

Seamless Integration:

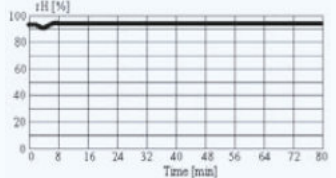
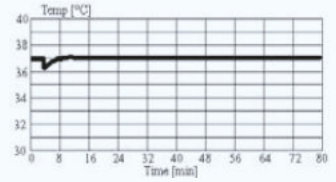
- Effortlessly integrate the STX44 into your laboratory workflow. User-friendly interfaces enable seamless integration with your existing systems and processes. Choose between stand-alone (SA) or bench-top (BT) configuration based on your space and operational requirements.

Access

Through the full-sized user door



Through the small robotic gate



Climate Options

Type	Temperature	Humidity	Description	Order Nr. Stand Alone	Order Nr. Bench Top
STX44-IC	6) 33..50°C 5) 33..70°C	7) max. 95% 70..95%	Incubator	9118 12 00	9118 07 00
STX44-HC 1)	04..25°C	max. 90%	Humid Cooler	9118 04 00	9118 08 00
STX44-DC2 1)3)	04..25°C	04..50%	Dry Storage	9118 12 55	9118 12 56
STX44-HR 1)	04..50°C 04..70°C	85..95% 70..95%	Humid Wide Range	9118 05 00	9118 09 00
STX44-DR2 1) 3)	04..50°C 04..70°C	02..50%	Dry Wide Range	9118 05 02	9118 05 03
STX44-AR 1) 2)	04..50°C 04..70°C	15..95%	Humidity Controlled	9118 12 45	9118 12 34
STX44-DF 1)	4) -20..0°C	02..45%	Deep Freezer	9118 12 38	9118 12 39
STX44-NC	-	-	No Climate	9118 12 40	9118 12 72
STX44-DH 5)	04..50°C 04..70°C	2..30% 70..95%	Dry Humid	9118 41 47	9118 41 48

- 1) Humidity depends on temperature setting
2) Humidity Adjustable
3) Adjustable dehumidification
4) up to +20°C on request

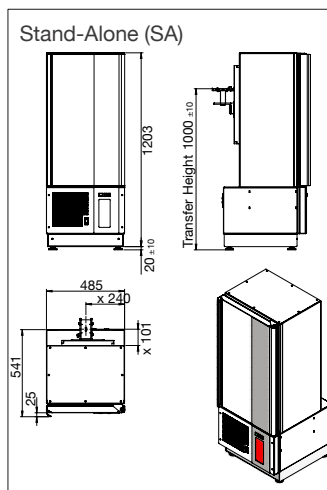
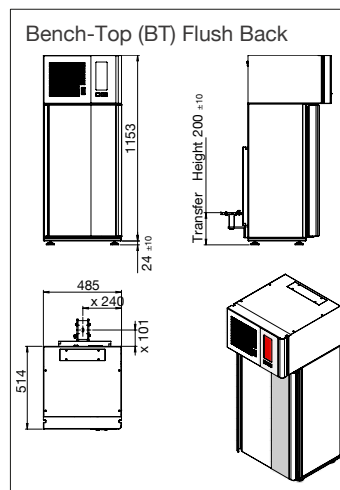
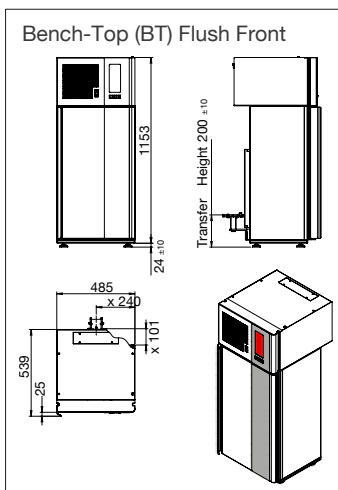
- 5) High Temp Option
6) No active cooling. Min temperature is Ambient 8°C
7) Steam Generator Option

Options

	Order Nr.		Order Nr.
High temperature 70°C capability	9118 11 02	Fast CO2	9118 11 12
Bar Code Reader Option	9118 11 03	Fast N2	9118 11 13
Plate Presence Sensor	9121 00 62	Fast O2	9118 11 14
iMotion access speeds for time critical applications	9111 10 00	Additional CO2	9118 11 07
Plate overheight feature 60-160mm configuration specific		Additional N2	9118 11 11
Plate overweight kit 300-800g	9118 13 83	Additional O2	9118 11 08
N-Way Decontamination	9122 05 28	Steam Injection	9118 11 16
Liconel self decontaminating incubator chamber	9118 12 43	Various Shaking options	see separate product flyer
Easy Clean option	9118 12 21	Wave option incl. controller	see separate product flyer
iTouch interaction screen	9118 35 68		

Like all members of the StoreX family the STX 44 can be equipped with various types of further options and a wide selection of useful accessories.

Dimensions



Capacity

Plate Type	Plate Height	Plate capacity of unit
NTP	5 mm	90
	11 mm	60
1536	12 mm	56
MTP	17 mm	44
	22 mm	36
	23 mm	34
	24 mm	34
	27 mm	30
DWP	44 mm	20
	53 mm	16
DiTi200*	66 mm	14
DiTi1000*	104 mm	8

*Overheight kit required for plate height > 60mm.

Integration:

For maximum flexibility the StoreX 44 is available in stand-alone (top transfer gate) or bench-top (bottom transfer gate) versions. The easily accessible transfer station and a standard RS232 connection ensure simple integration into an environment.

