

-20°C
+70°C

STX280

Automated
Incubator

- More Integration Flexibility
- Higher Access Speed
- 16-Bit Digital Climate Control



StoreX
Series

STX280

Stable and Precise Climate Conditions

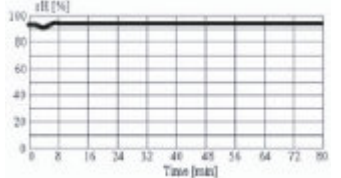
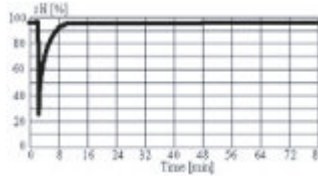
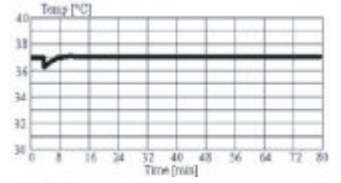
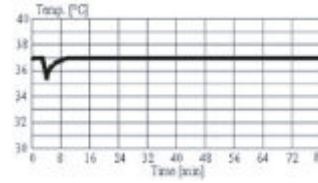
The STX280 is the classical 198 MTP-size incubator improved with increased 280 MTP capacity and newly implemented Flush Gate. The newly developed handling with higher speeds, spring loaded instead of counterweight, and flush gate enhances the overall performance of the unit. This unit can be stacked one on top of the other to give high throughput results.

The Flush Gate simplifies integration by omitting any obstacle in the Gate area.

Access

Through the full-sized user door

Through the small robotic gate



Climate Options

Type	Temperature	Humidity	Description	Order Nr. Stand Alone	Order Nr. Bench Top
STX280-IC	6) 33..50°C 5) 33..70°C	7) max. 95% 70..95%	Incubator	9122 05 10	9123 05 10
STX280-HC	04..25°C	max. 90%	Humid Cooler	9122 05 11	9123 05 11
STX280-DC2	04..25°C	04..50%	Dry Storage	9123 05 07	9123 05 08
STX280-HR	04..50°C 04..70°C	85..95% 70..95%	Humid Wide Range	9122 05 12	9123 05 12
STX280-DR2	04..50°C 04..70°C	02..50%	Dry Wide Range	9122 05 05	9122 05 22
STX280-AR	04..50°C 04..70°C	15..95%	Humidity Controlled	9122 05 21	9123 05 19
STX280-DF	4) -20..0°C	02..45%	Deep Freezer	9122 05 27	9122 05 31
STX280-NC	-	-	No Climate	9123 05 14	9123 05 15
STX280-DH	04..50°C 04..70°C	2..30% 70..95%	Dry Humid	9122 20 84	9122 20 85

- 1) Humidity depends on temperature setting
2) Humidity Adjustable
3) Adjustable dehumidification
4) up to +20°C on request

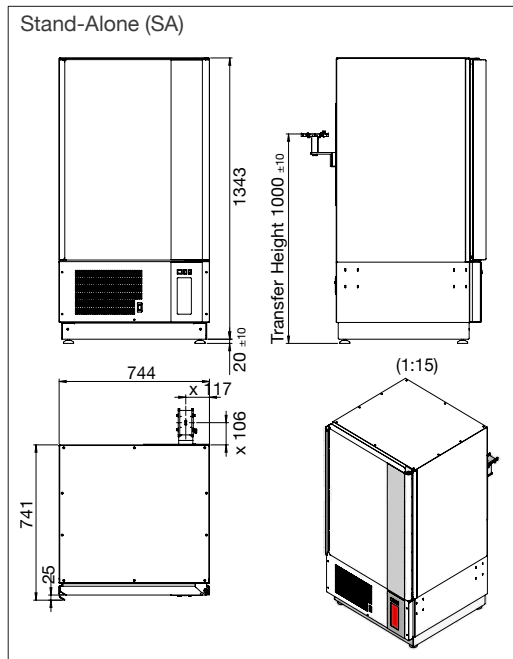
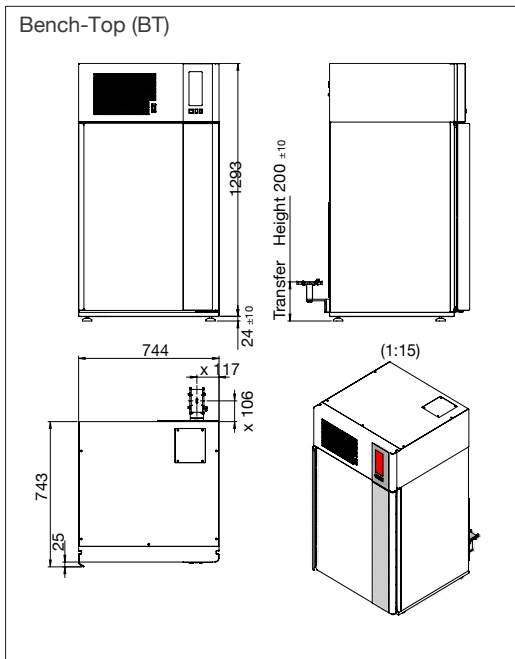
- 5) High Temp Option
6) No active cooling. Min temperature is Ambient 8°C
7) Steam Generator Option

Options

	Order Nr.	Gassing Option	Order Nr.
High temperature 70°C capability	9122 06 02	Fast CO2	9118 11 12
Bar Code Reader Option	9118 11 03	Fast N2	9118 11 13
Plate Presence Sensor	9121 00 62	Fast O2	9118 11 14
Plate overheight feature, 60-160mm	9122 06 82	Additional CO2	9118 11 07
Fast access for time critical applications	9111 10 00	Additional N2	9118 11 11
N-Way Decontamination	9122 05 28	Additional O2	9118 11 08
Liconel self decontaminating incubator chamber	9122 05 25		
Easy Clean option	9122 05 14		
Linear Shaker, Amplitude 1-100mm, 12-300 rpm	9122 05 15		
Side Gate on left side wall	9122 05 16		
Mirrored Gate Location	9122 05 17		
Steam Injection	9118 11 16		
iTouch interaction screen	9118 35 69		
iMotion access speeds for critical applications	9118 35 71		
Plate overweight kit 300-800g	9118 13 83		

Like all members of the StoreX family the STX 280 can be equipped with various types of further options and a wide selection of useful accessories.

Dimensions



Capacity

Plate Type	Plate Height	Plate capacity of unit
NTP	5 mm	580
	11 mm	380
1536	12 mm	350
MTP	17 mm	280
	22 mm	230
	23 mm	220
	24 mm	210
	27 mm	190
DWP	44 mm	130
	53 mm	100
DiTi200	66 mm	90
DiTi1000	104 mm	50

*Overheight kit required for plate height > 60mm.



www.liconic.com

Europe & International: LiCONiC AG, Liechtenstein
UK & Nordic: LiCONiC UK Ltd, Manchester
US & Asia: LiCONiC Inc, North Reading, MA
© LiCONiC AG, 10.2024