

-20°C
+70°C



STX140

Automated
Incubator

- Integrated Plate Handling
- Stand-Alone or Bench-Top
- Heated or Cooled Versions



StoreX
Series

STX140

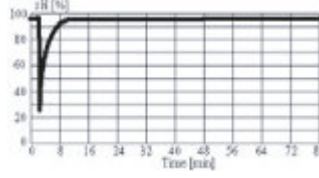
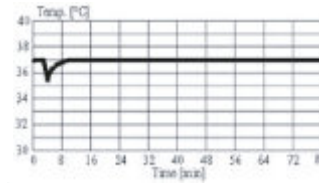
Stable and Precise Climate Conditions

The STX140 is the world's smallest carousel-based automated incubator. The STX140 slim 485 mm width minimizes the room required along a robotic line. Yet, keeping size constraints in mind, these units can be stacked to increase production needs.

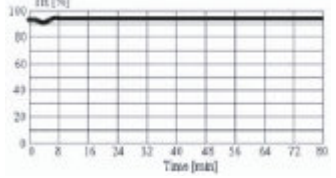
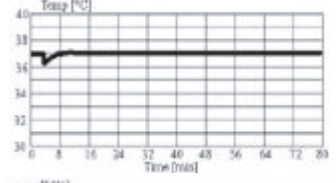
The STX140 features LiCONiC's new Flush Gate and LiCONiC's new speed-optimized handling. The Flush Gate simplifies integration by omitting any obstacle in the Gate area.

Access

Through the full-sized user door



Through the small robotic gate



Climate Options

Type	Temperature	Humidity	Description	Order Nr. Stand Alone	Order Nr. Bench Top
STX140-IC	6) 33..50°C 5) 33..70°C	7) max. 95% 70..95%	Incubator	9131 00 00	9131 05 03
STX140-HC 1)	04..25°C	max. 90%	Humid Cooler	9131 05 00	9131 05 04
STX140-DC2 1)3)	04..25°C	04..50%	Dry Storage	9131 05 25	9131 05 26
STX140-HR 1)	04..50°C 5) 04..70°C	7) 85..95% 70..95%	Humid Wide Range	9131 05 01	9131 05 05
STX140-DR2 1) 3)	04..50°C 04..70°C	02..50%	Dry Wide Range	9131 05 07	9131 05 08
STX140-AR 1) 2)	04..50°C 04..70°C	15..95%	Humidity Controlled	9131 05 12	9131 05 15
STX140-DF 1) 4)	4) -20..0°C	02..45%	Deep Freezer	9131 05 14	9131 05 19
STX140-NC	-	-	No Climate	9131 05 28	9131 05 29
STX140-DH	5) 04..50°C 04..70°C	2..30% 70..95%	Dry Humid	9131 04 39	9131 04 40

- 1) Humidity depends on temperature setting
2) Humidity Adjustable
3) Adjustable dehumidification
4) up to +20°C on request

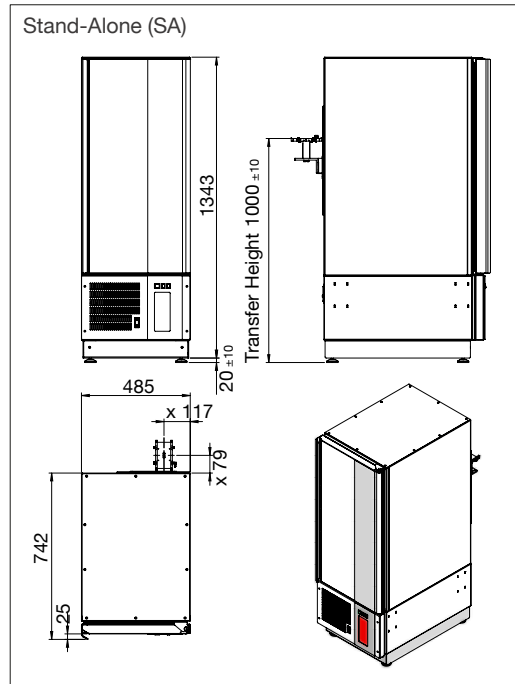
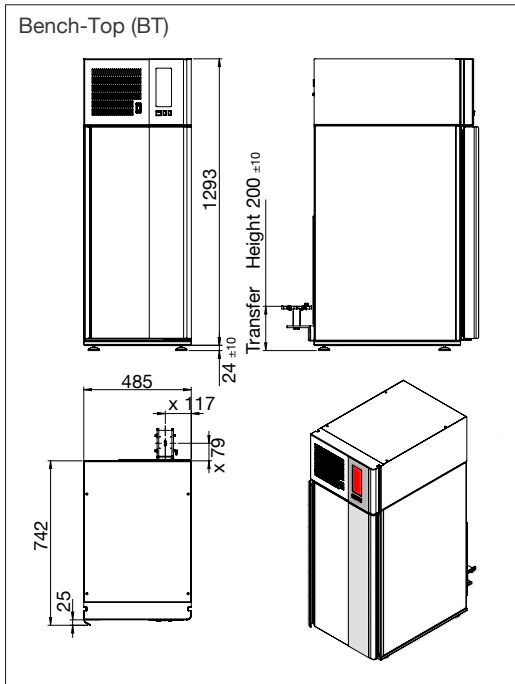
- 5) High Temp Option
6) No active cooling. Min temperature is Ambient 8°C
7) Steam Generator Option

Options

	Order Nr.	Order Nr.	Order Nr.
High temperature 70°C capability	9122 06 02	Fast CO2	9118 11 12
Bar Code Reader Option	9118 11 03	Fast N2	9118 11 13
Plate Presence Sensor	9121 00 62	Fast O2	9118 11 14
iMotion access speeds for time critical applications	9118 35 71	Additional CO2	9118 11 07
Plate overheight feature 60-160mm	9131 05 40	Additional N2	9118 11 11
N-Way Decontamination	9131 04 32		
Liconel self decontaminating incubator chamber	9131 05 11		
Linear Shaker, Amplitude 1-100mm, 12-300 rpm	9131 00 18		
Steam Injection	9118 11 16		
Side Gate (left side wall, seen from front)	9131 05 20		
Mirrored Gate Location, on back wall (MR)	9131 05 30		
Plate overheight kit 300-800g	9118 13 83		

Like all members of the StoreX family the STX 140 can be equipped with various types of further options and a wide selection of useful accessories.

Dimensions



Capacity

Plate Type	Plate Height	Plate capacity of unit	
NTP	5 mm	290	
	11 mm	190	
	1536	12 mm	175
	MTP	17 mm	140
		22 mm	115
DWP	23 mm	110	
	24 mm	105	
	27 mm	95	
DWT	44 mm	65	
	53 mm	50	
DiTi200*	66 mm	45	
DiTi1000*	104 mm	25	

*Overheight kit required for plate height > 60mm.

Integration:

The STX140 instruments are available for integration with the instrument placed on the table surface (BenchTop BT) or the instrument standing on the floor (StandAlone SA). The combination of a StandAlone configuration with a Bench-Top allows these units to be stacked.



www.liconic.com

Europe & International: LiCONiC AG, Liechtenstein
UK & Nordic: LiCONiC UK Ltd, Manchester
US & Asia: LiCONiC Inc, North Reading, MA
© LiCONiC AG, 10.2024

Information within this document is subject to be changed without prior notice. Specification values without tolerances assume a +/- 10% tolerance. For details please contact our applications. sales@liconic.com